



The Power of Innovation

Introducing the only commercial size tankless water heater above 250,000 BTU/HR that delivers:

- Up to 99% efficiency
- +/-4° temperature control, thanks to 20:1 turndown
- High reliability
- Small footprint
- Reduced standby and cycling losses
- Low NOx



MODEL INN 600

TECHNICAL DATA SHEET

AERCO Innovation Commercial Water Heating System

The AERCO Innovation Water Heater utilizes state-of-the-art technology to easily meet highly diverse, demanding commercial and industrial hot water requirements in a compact and reliable condensing design. The durable high efficiency helical firetube heat exchanger is time tested to be impervious to thermal stress for an extended life. The all stainless steel construction maximizes longevity in the condensing application and the corrugated tubes increase effective heat transfer surface area for optimal thermal efficiencies up to 99%. Enhanced waterside flow distribution maintains constant minimum velocities across the heat exchanger; this keeps solids in suspension and greatly reduces scale dropout to maintain high efficiency performance and long life.

The advanced control system of the Innovation incorporates dynamic feed-forward sensing for precise modulation of its 14:1 turndown air/fuel delivery system. These controls fire the unit to accurately match load requirements and produce tight hot water outlet temperature control. Wasteful overshooting and cycling are virtually eliminated as is the need for storage tanks, mixing valves and other temperature averaging components in most applications. The set point is adjustable from 50°F to 190°F and control to +/- 4°F is easily achieved. Sidewall, through-the-roof, and sealed combustion capabilities provide broad installation flexibility. The small foot print, doorway size, and quiet operation make it ideal for retrofit. With its tight temperature control, high efficiency, reliability and longevity the AERCO Innovation is truly unique and advanced design.



RECOVERY CAPACITY*

Temperature Rise (F)	60°	70°	80°	90°	100°	110°	120°	130°	140°
Gallons Per Minute	19.3	16.5	14.5	12.8	11.6	10.5	9.6	8.9	8.3
Gallons Per Hour	1158	990	870	768	696	630	576	534	498

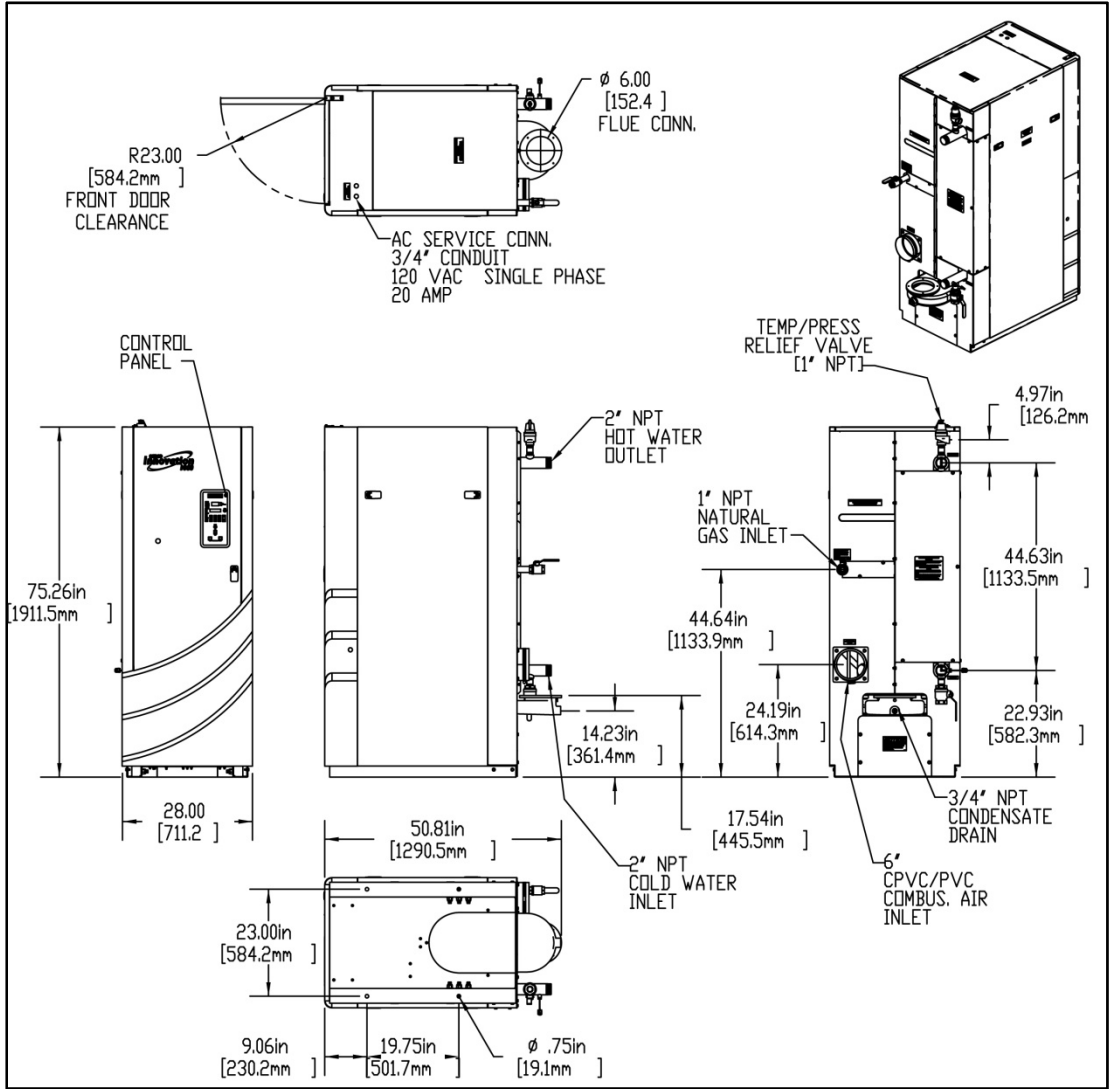
*In condensing mode <2000 ft above sea level

FEATURES

- Precise Temperature Control +/- 4°F
- Fully Modulating, 14:1 Energy Input
- Condensing Design
- Stainless Steel Heat Exchanger
- Compact, Space Efficient Design
- Natural Gas
- Outlet Water Temperature of 50° to 190°F
- UL, CUL Listed for Closet Installation on Combustible Flooring
- NOx Emissions: < 9 ppm @ 3% O₂ (Natural Gas)
- 160 PSIG ASME Working Pressure Certified
- Direct or Conventional Vent with PVC, CPVC, PP, or AL29-4C Materials
- Quiet Operation throughout Firing Range <55 dba
- Remote Alarm Contacts
- Sealed Combustion
- UL, CUL Listed, FM Compliant, ASME Section IV (HLW) Stamped



DIMENSIONS



SPECIFICATIONS

Adjustable Temperature Control..... 50°F to 190°F
 Ambient Temperature 0°F to 130°F
 Accuracy +/-4°F
 Input 600,000 BTUH (Natural Gas)
 Net Output..... 578,000 BTUH (Natural Gas)
 Turndown Ratio..... 14:1
 Flue Size6" Diameter
 Flue Material (per local code) PVC, CPVC, PP or AL29-4C
 Water Inlet & Outlet..... 2" NPT Male
 Gas Connection 1" NPT Male
 Gas Pressure Requirements 14" WC Maximum
 4" WC Minimum @ Full Load (Nat. Gas)

Maximum Continuous Water Flow..... 50 GPM
 Condensate Connection 3/4" NPT Female
 Maximum Condensate Flow 4.5 GPH
 Pressure Rating 160 PSIG @ 210°F
 NOx Emissions Certifications SCAQMD, TCEQ
 Standard Listing & Approvals UL, CUL, ASME (HLW)
 Gas Train Options..... FM Compliant or Factory Installed
 Double Block and Bleed (Formerly IRI)
 Electrical Requirements..... 120/1/60 20 AMP (9 Amp FLA)
 Water Pressure Drop @ 10 gpm 1 psi
 Water Pressure Drop @ 20 gpm 1.5 psi
 Water Volume 26 gallons
 Weight, Installed 960 lbs (dry), 1,177 lbs (wet)
 Weight, Shipping..... 1,060 lbs

Represented By:

Specifications subject to change.
 Consult website or contact AERCO.
 INN-03 Revised 8/17/11 NY



WATER HEATERS • BOILERS • PARTS & ACCESSORIES

AERCO INTERNATIONAL, INC. • 100 Oritani Drive
 Blauvelt, NY 10913 • 800-526-0288 • FAX 845-580-8090
 www.aerco.com



MODEL INN 800

TECHNICAL DATA SHEET

AERCO Innovation Commercial Water Heating System

The AERCO Innovation Water Heater utilizes state-of-the-art technology to easily meet highly diverse, demanding commercial and industrial hot water requirements in a compact and reliable condensing design. The durable high efficiency helical firetube heat exchanger is time tested to be impervious to thermal stress for an extended life. The all stainless steel construction maximizes longevity in the condensing application and the corrugated tubes increase effective heat transfer surface area for optimal thermal efficiencies up to 99%. Enhanced waterside flow distribution maintains constant minimum velocities across the heat exchanger; this keeps solids in suspension and greatly reduces scale dropout to maintain high efficiency performance and long life.

The advanced control system of the Innovation incorporates dynamic feed-forward sensing for precise modulation of its 18:1 turndown air/fuel delivery system. These controls fire the unit to accurately match load requirements and produce tight hot water outlet temperature control. Wasteful overshooting and cycling are virtually eliminated as is the need for storage tanks, mixing valves and other temperature averaging components in most applications. The set point is adjustable from 50°F to 190°F and control to +/- 4°F is easily achieved. Sidewall, through-the-roof, and sealed combustion capabilities provide broad installation flexibility. The small foot print, doorway size, and quiet operation make it ideal for retrofit. With its tight temperature control, high efficiency, reliability and longevity the AERCO Innovation is truly unique and advanced design.



RECOVERY CAPACITY*

Temperature Rise (F)	60°	70°	80°	90°	100°	110°	120°	130°	140°
Gallons Per Minute	25.7	22.0	19.3	17.1	15.4	14.0	12.8	11.9	11.0
Gallons Per Hour	1542	1320	1158	1026	924	828	768	714	660

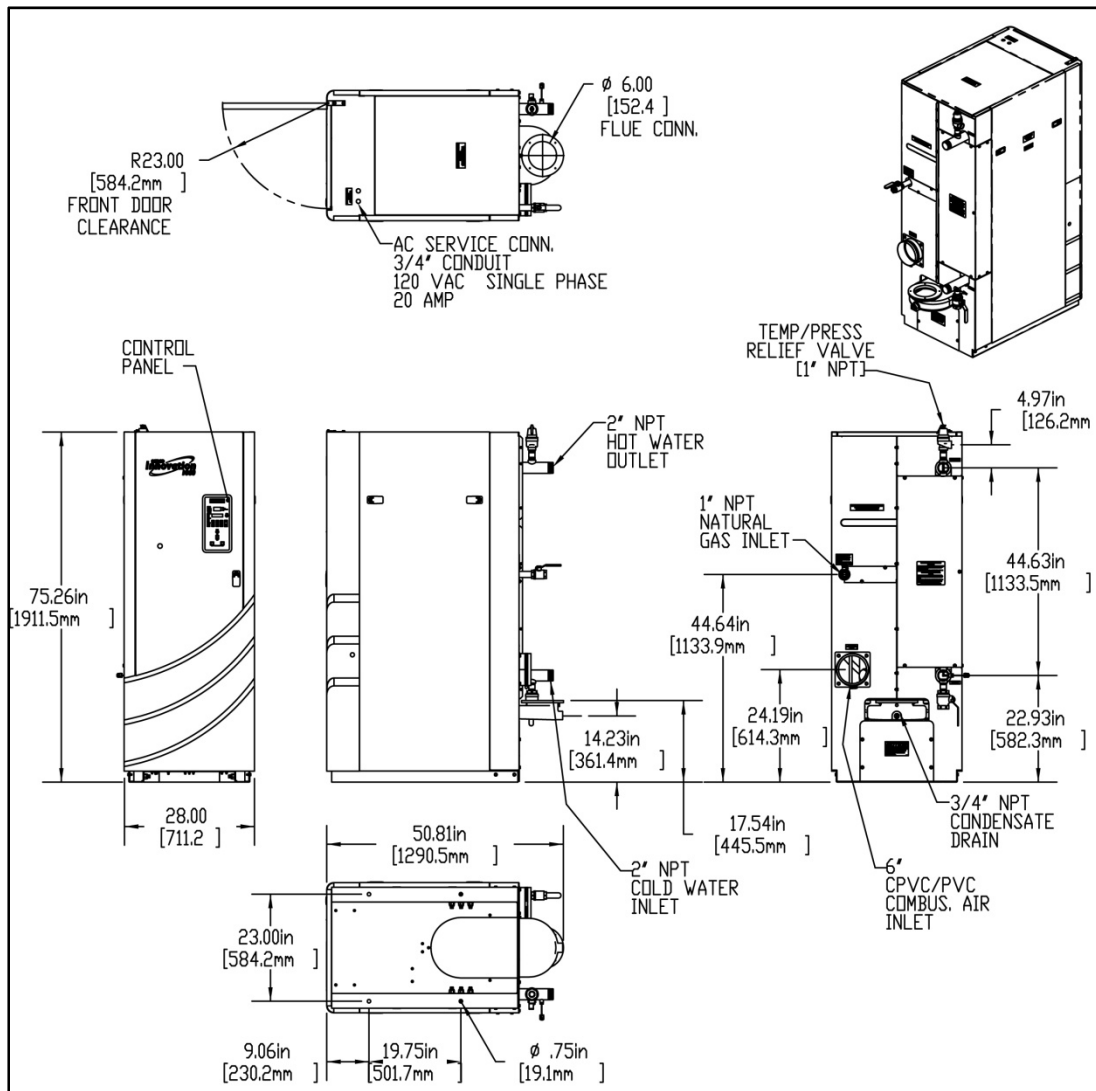
*In condensing mode <2000 ft above sea level

FEATURES

- Precise Temperature Control +/- 4°F
- Fully Modulating, 18:1 Energy Input
- Condensing Design
- Stainless Steel Heat Exchanger
- Compact, Space Efficient Design
- Natural Gas
- Outlet Water Temperature of 50° to 190°F
- UL, CUL Listed for Closet Installation on Combustible Flooring
- NOx Emissions: < 9 ppm @ 3% O₂ (Natural Gas)
- 160 PSIG ASME Working Pressure Certified
- Direct or Conventional Vent with PVC, CPVC, PP, or AL29-4C Materials
- Quiet Operation throughout Firing Range <55 dba
- Remote Alarm Contacts
- Sealed Combustion
- UL, CUL Listed, FM Compliant, ASME Section IV (HLW) Stamped



DIMENSIONS



SPECIFICATIONS

Adjustable Temperature Control..... 50°F to 190°F
 Ambient Temperature 0°F to 130°F
 Accuracy +/-4°F
 Input 800,000 BTUH (Natural Gas)
 Net Output..... 771,000 BTUH (Natural Gas)
 Turndown Ratio..... 18:1
 Flue Size 6" Diameter
 Flue Material (per local code) PVC, CPVC, PP or AL29-4C
 Water Inlet & Outlet..... 2" NPT Male
 Gas Connection 1" NPT Male
 Gas Pressure Requirements 14" WC Maximum
 4" WC Minimum @ Full Load (Nat. Gas)

Maximum Continuous Water Flow..... 50 GPM
 Condensate Connection 3/4" NPT Female
 Maximum Condensate Flow 6 GPH
 Pressure Rating 160 PSIG @ 210°F
 NOx Emissions Certifications SCAQMD, TCEQ
 Standard Listing & Approvals UL, CUL, ASME (HLW)
 Gas Train Options..... FM Compliant or Factory Installed
 Double Block and Bleed (Formerly IRI)
 Electrical Requirements 120/1/60 20 AMP (9 Amp FLA)
 Water Pressure Drop @ 15 gpm 1.3 psi
 Water Pressure Drop @ 25 gpm 1.7 psi
 Water Volume 24.5 gallons
 Weight, Installed 980 lbs (dry), 1,202 lbs (wet)
 Weight, Shipping..... 1,080 lbs

Represented By:

Specifications subject to change.
 Consult website or contact AERCO.
 INN-02 Revised 8/17/11 NY



WATER HEATERS • BOILERS • PARTS & ACCESSORIES

AERCO INTERNATIONAL, INC. • 100 Oritani Drive
 Blauvelt, NY 10913 • 800-526-0288 • FAX 845-580-8090
 www.aerco.com



MODEL INN 1060

TECHNICAL DATA SHEET

AERCO Innovation Commercial Water Heating System

The AERCO Innovation Water Heater utilizes state-of-the-art technology to easily meet highly diverse, demanding commercial and industrial hot water requirements in a compact and reliable condensing design. The durable high efficiency helical firetube heat exchanger is time tested to be impervious to thermal stress for an extended life. The all stainless steel construction maximizes longevity in the condensing application and the corrugated tubes increase effective heat transfer surface area for optimal thermal efficiencies up to 99%. Enhanced waterside flow distribution maintains constant minimum velocities across the heat exchanger; this keeps solids in suspension and greatly reduces scale dropout to maintain high efficiency performance and long life.

The advanced control system of the Innovation incorporates dynamic feed-forward sensing for precise modulation of its 20:1 turndown air/fuel delivery system. These controls fire the unit to accurately match load requirements and produce tight hot water outlet temperature control. Wasteful overshooting and cycling are virtually eliminated as is the need for storage tanks, mixing valves and other temperature averaging components in most applications. The set point is adjustable from 50°F to 190°F and control to +/- 4°F is easily achieved. Sidewall, through-the-roof, and sealed combustion capabilities provide broad installation flexibility. The small foot print, doorway size, and quiet operation make it ideal for retrofit. With its tight temperature control, high efficiency, reliability and longevity the AERCO Innovation is truly unique and advanced design.



RECOVERY CAPACITY*

Temperature Rise (F)	60°	70°	80°	90°	100°	110°	120°	130°	140°
Gallons Per Minute	34.0	29.2	25.6	22.7	20.4	18.6	17.0	15.7	14.6
Gallons Per Hour	2040	1752	1533	1362	1224	1116	1020	942	876

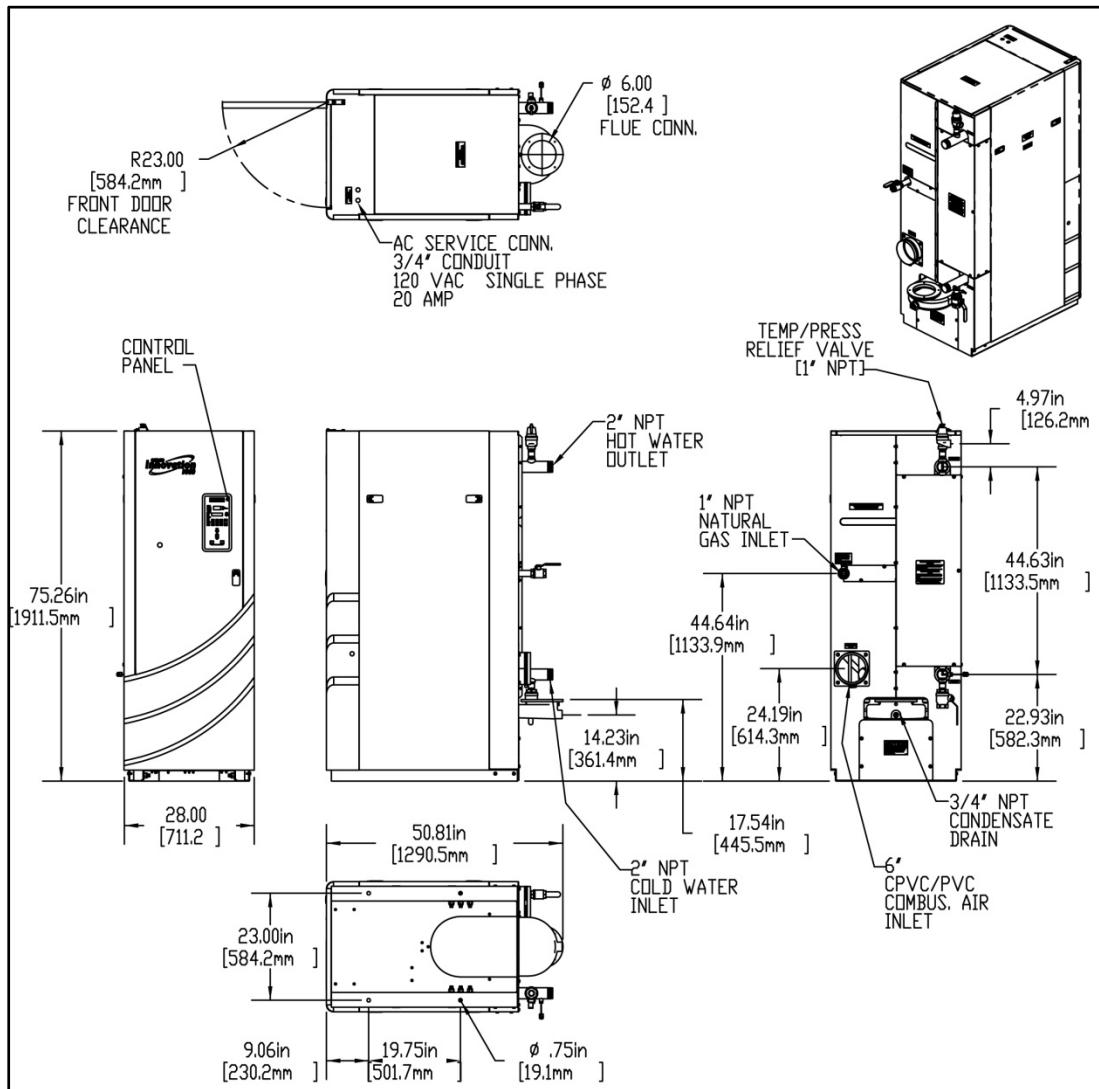
*In condensing mode <2000 ft above sea level

FEATURES

- Precise Temperature Control +/- 4°F
- Fully Modulating, 20:1 Energy Input
- Condensing Design
- Stainless Steel Heat Exchanger
- Compact, Space Efficient Design
- Natural Gas
- Outlet Water Temperature of 50° to 190°F
- UL, CUL Listed for Closet Installation on Combustible Flooring
- NOx Emissions:12.4 ppm @ 3% O₂ (Natural Gas)
- 160 PSIG ASME Working Pressure Certified
- Direct or Conventional Vent with PVC, CPVC, PP, or AL29-4C Materials
- Quiet Operation throughout Firing Range <55 dba
- Remote Alarm Contacts
- Sealed Combustion
- UL, CUL Listed, FM Compliant, ASME Section IV (HLW) Stamped



DIMENSIONS



SPECIFICATIONS

Adjustable Temperature Control..... 50°F to 190°F
 Ambient Temperature 0°F to 130°F
 Accuracy +/- 4°F
 Input 1,060,000 BTUH (Natural Gas)
 Net Output..... 1,022,000 BTUH (Natural Gas)
 Turndown Ratio..... 20:1
 Flue Size 6" Diameter
 Flue Material (per local code) PVC, CPVC, PP or AL29-4C
 Water Inlet & Outlet..... 2" NPT Male
 Gas Connection 1" NPT Male
 Gas Pressure Requirements 14" WC Maximum
 4" WC Minimum @ Full Load (Nat. Gas)

Maximum Continuous Water Flow..... 50 GPM
 Condensate Connection 3/4" NPT Female
 Maximum Condensate Flow 8 GPH
 Pressure Rating 160 PSIG @ 210°F
 NOx Emissions Certifications SCAQMD, TCEQ
 Standard Listing & Approvals UL, CUL, ASME (HLW)
 Gas Train Options..... FM Compliant or Factory Installed
 Double Block and Bleed (Formerly IRI)
 Electrical Requirements 120/1/60 20 AMP (9 Amp FLA)
 Water Pressure Drop @ 20gpm 1.5 psi
 Water Pressure Drop @ 30gpm 2 psi
 Water Volume 23 gallons
 Weight, Installed 1,000 lbs (dry), 1,190 lbs (wet)
 Weight, Shipping..... 1,100 lbs

Represented By:

Specifications subject to change.
 Consult website or contact AERCO.
 INN-01 Revised 8/17/11 NY

AERCO

WATER HEATERS • BOILERS • PARTS & ACCESSORIES

AERCO INTERNATIONAL, INC. • 100 Oritani Drive
 Blauvelt, NY 10913 • 800-526-0288 • FAX 845-580-8090
 www.aerco.com